

E-Rate 29 (FY2026) Internal Connections Q & A – RFP 26-30 (Updated 1/13/26)

Question-1: Are alternative UPS brands for the Tripp Lite 550 VA acceptable for the portables?

Answer-1: Yes

Question-2: Do we currently have any access points installed in high ceilings that require a lift?

Answer-2: Yes, a lift will be necessary for some Gyms, Cafeterias and outdoor AP installations.

Question-3: Will any outdoor access points require a conduit?

Answer-3: Yes, a short flex conduit will be required to protect exposed cabling

Question-4: Do we need to re-terminate cables where we are swapping patch panels?

Answer-4: Yes

Question-5: Do we need to retest any cabling?

Answer-5: Yes, new cable runs and re-terminated cabling needs to be re-tested

Question-6: For the UPS units, are the correct power receptacles available onsite?

Answer-6: Yes, the network closets have sufficient outlets available.

Question-7: Does the pricing submission need to match the breakdown in IONWAVE?

Answer-7: Yes

Question-8: Is there any rack reconfiguration that needs to happen with the switch installs? If so, how many IDFs?

A: All MDF and IDFs will require rack restructuring to support patch panel switch configuration.

Question-9: Would you like fiber patch cables included for every SFP? What length?

A: Yes, fiber patch cables for every SFP were included as part of the RFP requirements. (Fiber Patch Cables are listed in the MDF – Fiber Optic Cables section of the BOM)

Question-10: What type of installation is required for the wall mount cabinets?

A: Permanent wall-mounted installation compliant with manufacturer load ratings and local building codes. Plywood backboard support will be required in some locations.

Question-11: What model of wireless controller will the wireless access points be added to?

A: The access points will be pointed to the district central Cisco 9800-80 wireless lan controller.

Question-12: What areas will the 9163 access points be installed in?

A: Existing External Access Points will be replaced, and additional external access points will be installed. Each school will have two external AP's, one in each student pick-up/drop off area.

Question-13: Will any of the access points require a lift for installation? If so, how many campuses?
A: Yes, we have identified 3 campuses that will need a lift. San Carlos, Eisenhower, and Magee.

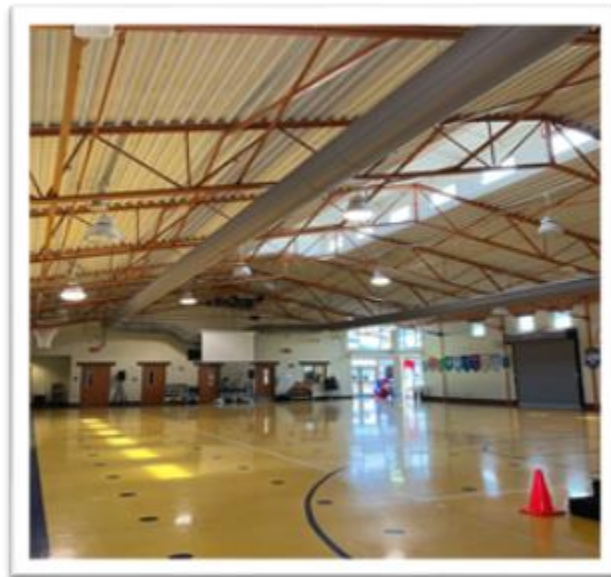
Question 14: Do you have AP placement maps for the access points being requested?
A: The Internal AP's will be replacing existing internal access points; classrooms, libraries, gymnasiums, cafeterias, and front office areas have internal AP's. External AP locations will be provided (see maps below).

Question 13 (Gym images of areas needing lift for AP installation)

San Carlos Elementary



Magee Elementary



Eisenhower Elementary

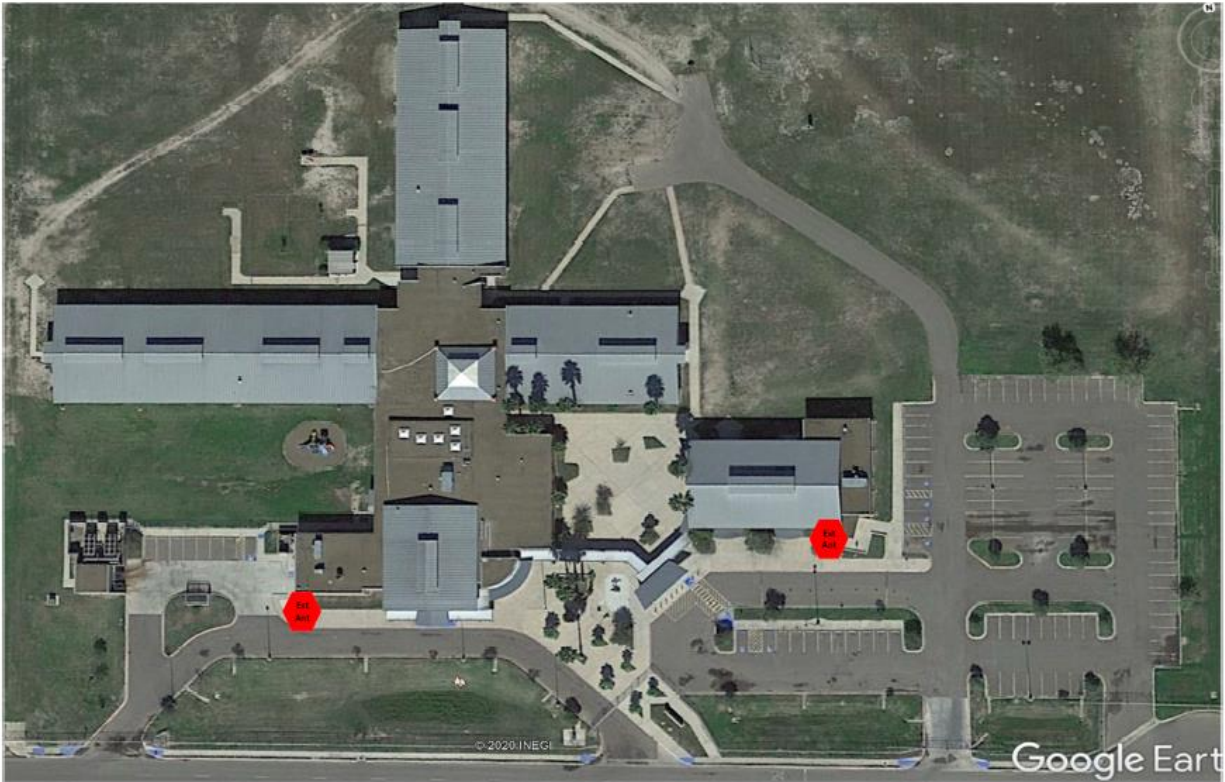




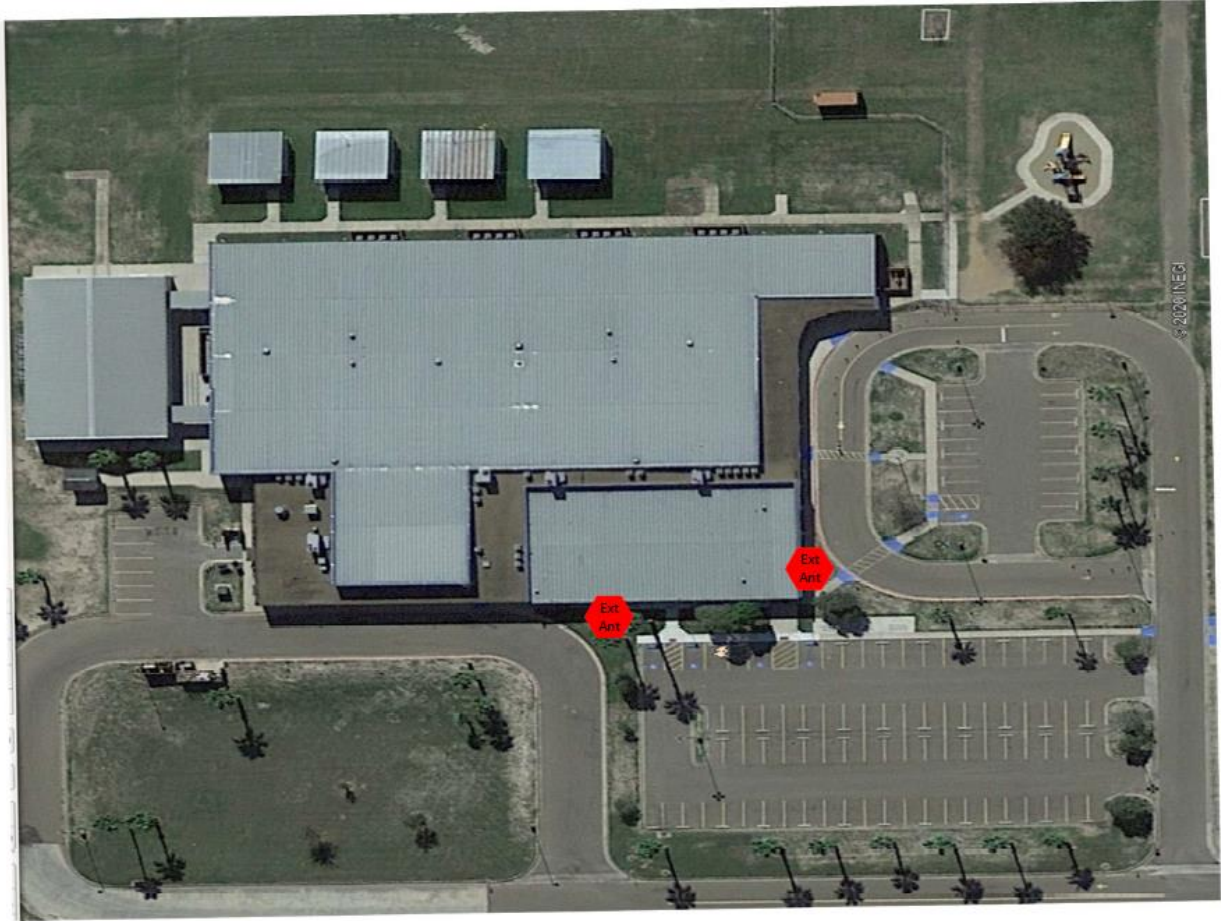
Canterbury



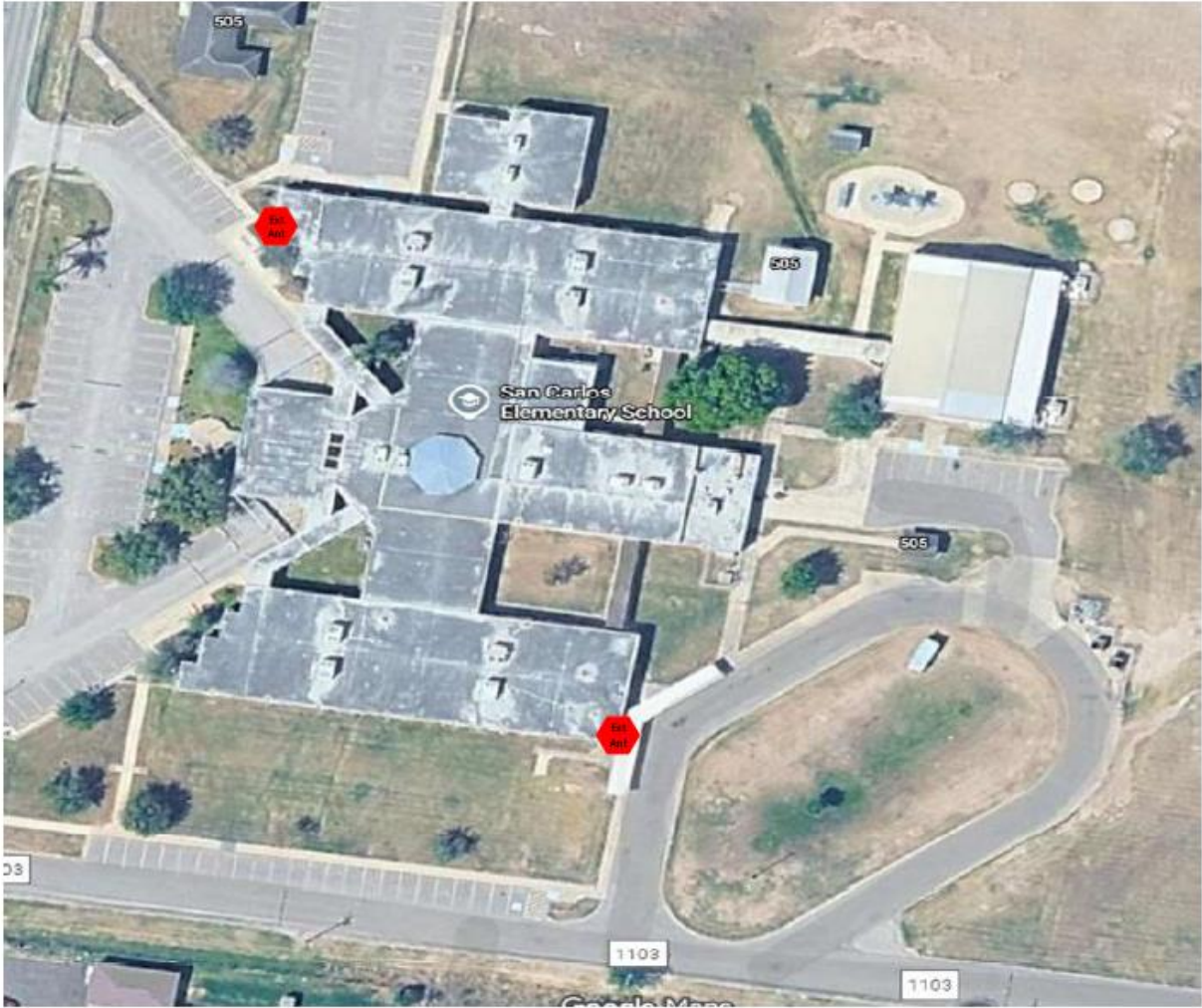
Escandon/Guerra/Eisenhower/Monte Cristo/
Trevino



Magee



Villarreal



San Carlos/De Zavala